

Campus Sustainability **Progress Report**

Fiscal Years 2019 & 2020

Tufts
UNIVERSITY

Office of
Sustainability

Tufts University has a longstanding legacy of environmental stewardship, formally dating back to 1990 at the creation of its first environmental policy. Thirty years later, at the close of fiscal year 2020, Tufts continues to put its commitment to sustainability into practice across the University.

This Report represents a sampling of sustainable initiatives at Tufts throughout **fiscal years (FYs) 2019 and 2020** (July 2018 – June 2020) and is thematically organized in accordance with the **Sustainability, Tracking, Assessment & Rating System (STARS)**, a program of the **Association for the Advancement of Sustainability in Higher Education (AASHE)**. **In March 2019**, the Tufts Office of Sustainability (OOS) submitted a STARS report that **re-certified the university with a Silver rating**. The following year, the COVID-19 pandemic brought unprecedented changes and challenges to University operations, and the stories included here illustrate the persistent resilience of Tufts faculty, staff, and students in working towards a sustainable future for the planet and its inhabitants.

Today, Tufts strives to be an innovative university with a profound impact on its community and the world. From rising sea levels and intensified wildfires to its disproportionate effects on low-income and Black and Indigenous communities, the climate crisis has become a leading concern of the twenty-first century. Through sustainable operations, just stewardship of resources, and education of active world citizens, Tufts' work towards healthy environments and communities will define the University as a light on the hill for generations to come.

Tina Woolston
Sustainability Program Director

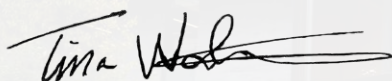







TABLE OF CONTENTS

CONTINUING COMMITMENTS.....	2
ACADEMICS & RESEARCH.....	3
ENGAGEMENT.....	4
UNIVERSITY REPORT CARDS.....	5
OPERATIONS.....	8
PLANNING & ADMINISTRATION	10
INNOVATION & LEADERSHIP.....	11
A LOOK AHEAD	12

Stay connected for the most recent information:

-  sustainability.tufts.edu
go.tufts.edu/Recycle
-  go.tufts.edu/oosnewsletter
-  [@greenttufts](https://www.facebook.com/greenttufts)
-  [@greenttufts](https://twitter.com/greenttufts)
-  [@greenttufts](https://www.instagram.com/greenttufts)
[@tuftsecoreps](https://www.instagram.com/tuftsecoreps)

CONTINUING COMMITMENTS

Tufts remains a signatory of three ongoing sustainability commitments:



White House Educators Commitment on Resilient Design

The [Department of Urban and Environmental Policy and Planning \(UEP\)](#) endorsed the [White House Educators Commitment on Resilient Design](#) in May 2016. The statement defines resilience as “the ability to prepare for, absorb, recover from, and more successfully adapt to adverse events.” In FYs 19&20, UEP reports the following progress:

- Creation of a new [MS in Sustainability](#) degree program, as well as courses in sustainability analytic tools to earn new [GIScience](#) and [Spatial Data Analytics Certificates](#).
- Establishment of the [Betsy McDonald Llanwarne Endowed Fund](#) to support student research, internships, and group projects in sustainability and resilience.

President’s Health Educators Climate Commitment

The [Tufts School of Medicine and Public Health](#) signed the [President’s Health Educators Climate Commitment](#) in December 2015, committing to train health professionals to effectively address the health impacts of climate change and to strengthen the knowledge base of climate and health with the best science and academic rigor. The following progress was made in FYs 19&20:

- A [Climate and Health Symposium](#) was held in December 2019 at the Tufts University School of Medicine (TUSM) and the Tufts Medical Center, with medical students, faculty and other Boston health professionals in attendance.
- A group of students created a Tufts chapter of [Medical Students for a Sustainable Future](#) to expand climate change curriculum. They completed a [Planetary Health Report Card](#) for TUSM and published it alongside 11 other U.S. and Canadian medical schools in July 2020.

Second Nature Climate Commitment

President Tony Monaco signed the [Second Nature Climate Commitment](#) in April 2016, joining university leaders in using a systems approach to mitigating and adapting to a changing climate. Significant steps taken in FYs 19&20 are listed below, as well as expanded upon on page 10 of this report:



- Tufts completed a [resilience assessment](#) for the Boston Health Sciences and SMFA campuses in January 2020.
- Tufts [engaged consultants to create a decarbonization plan](#) for the energy used to heat and cool the Medford/Somerville campus. An action plan was realized in July 2020 with recommendations for alternate capital projects, carbon-neutral projects, and energy efficiency work.

Carbon Neutrality



As part of the Second Nature Climate Commitment, Tufts has committed to achieving carbon neutrality by 2050. Each year the OOS compiles the university’s greenhouse gas (GHG) emissions and publishes the total equivalent emissions of metric tons of carbon dioxide (MTCO₂e).

As of FY19, Tufts reduced GHG emissions by 12% from 1990 levels. See page 5 for a graph of Tufts’ emissions over time, through FY20. Reduction of 12% also fulfilled two previous [university emissions goals](#):

- [10% below 1990 levels by 2020](#), as part of the New England Governors and Eastern Canadian Premiers Climate Change Action Plan, signed by Tufts President Lawrence Bacow in 2003.
- [10-25% below 1990 levels by 2020](#), as recommended by the 2013 [Campus Sustainability Council](#), following the Global Warming Solutions Act of 2008.

ACADEMICS & RESEARCH

Sustainability in the Curriculum

Fall 2018 - Summer 2019

64 undergraduate & graduate courses focused on sustainability

380 more courses had units, challenges or activities related to sustainability

Fall 2019 - Spring 2020

81 undergraduate & graduate courses focused on sustainability

388 more courses had units, challenges or activities related to sustainability



New Graduate Programs

- Tufts Institute of the Environment launched a **Sustainable Water Management degree** in FY19, with 4 program tracks
- UEP launched a **Masters in Sustainability** in FY20, enrolling 12 students to start
- The Dept. of Civil and Environmental Engineering announced an **Offshore Wind Energy graduate program** in FY20, to start in FY21. It is the *first of its kind in the U.S.*

New Research Focus



CREATE Solutions, a collaboration managed by the Fletcher School's **Center for International Environment & Resource Policy (CIERP)**, was founded in 2018 to research solutions in **C**limate, **R**enewable **E**nergy, **A**griculture, **T**echnology and **E**cology.

In FYs 19&20, the **Global Development and Environment (GDAE)** Institute at Tufts, the **Tufts Institute of the Environment (TIE)**, the Consulate General of France, and the international **4 per 1000 Initiative**, hosted symposiums that created the **Northeast Healthy Soil Network**.



Reimagining Labs



Sarah Iacobucci, Director of Undergraduate Laboratories in the Dept. of Chemistry, A&S, **made experiments in the teaching labs smaller-scale and "greener"**— a chemistry term for swapping toxic chemicals with more environmentally-friendly replacements. New lab procedures reuse, reduce, and recycle the natural resources used in experiments.

Dr. Iacobucci demonstrating the micro-buret she made.

Students



Operating with **34 Eco-Reps** and **4 Eco-Rep Coordinators** in both FY19 and FY20, the Eco-Reps program raised awareness of ecological issues and encouraged environmentally responsible behavior among their peers.

Program accomplishments during this time:

- 5,836 **gallons of compost collected** from residence halls
- 4,756 **Meatless Monday pledges signed** by students
- 3,546 **students engaged** through Eco-Rep events
- 756 **Green Room Certified dorms**

Across Tufts



The Green Fund, a program to fund sustainability projects across Tufts, carried out its first two full application cycles in FYs 19&20. Funded projects include:

FY19 Application Cycle:

- Edible Insect Festival
- SMFA Health, Safety, & Sustainability Day
- Tufts Pollinator Initiative
- Nitrile Glove Recycling Pilot Program
- Tufts Food Security Assessment

FY20 Application Cycle:

- Every Watt Counts
- MULCH (Multi-Site Conference Hosting Initiative)
- New Entry Fall Harvest Week
- SMFA Garden
- Take Out at Elm Café
- Tisch Rooftop Revitalization
- TMC (Tufts Mountain Club) Compost

Community

Tufts' Sustainability Program Director, Tina Woolston, is currently serving as a member of the Higher Education Working Group (HEWG), an initiative of the Boston Mayor's Green Ribbon Commission. The HEWG works alongside members of other Greater Boston Area-based universities to help the city mitigate and adapt to climate change. Nitsan Shakked, Associate Director of Tufts Institute of the Environment, and Laura Corlin, Assistant Professor of Public Health and Community Medicine, have also served on a task force for the HEWG.



ENGAGEMENT

Staff & Faculty

- A Green Office Certification Challenge was last held in Spring 2019, with **23 offices participating**. The Green Office program supports and recognizes offices engaging in sustainable practices.



Staff in Human Resources receiving their Gold-level Green Office certificate from President Monaco.

Participating offices:

By campus:

- 17 in Medford
- 4 in Boston
- 2 in Grafton

By certification:

- 8 Bronze
- 6 Silver
- 7 Gold
- 2 Platinum

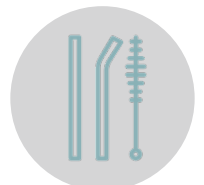
- A total of **53 new Eco-Ambassadors** were trained in FYs 19&20. The Eco-Ambassadors program educates staff and faculty to be sustainability leaders and promote green behaviors in their offices and across the Tufts community.

A break-down of new Eco-Ambassadors:

- 30 in Medford/Somerville
- 16 in Boston
- 5 in Grafton

+ 4 Eco-Ambassador grants awarded

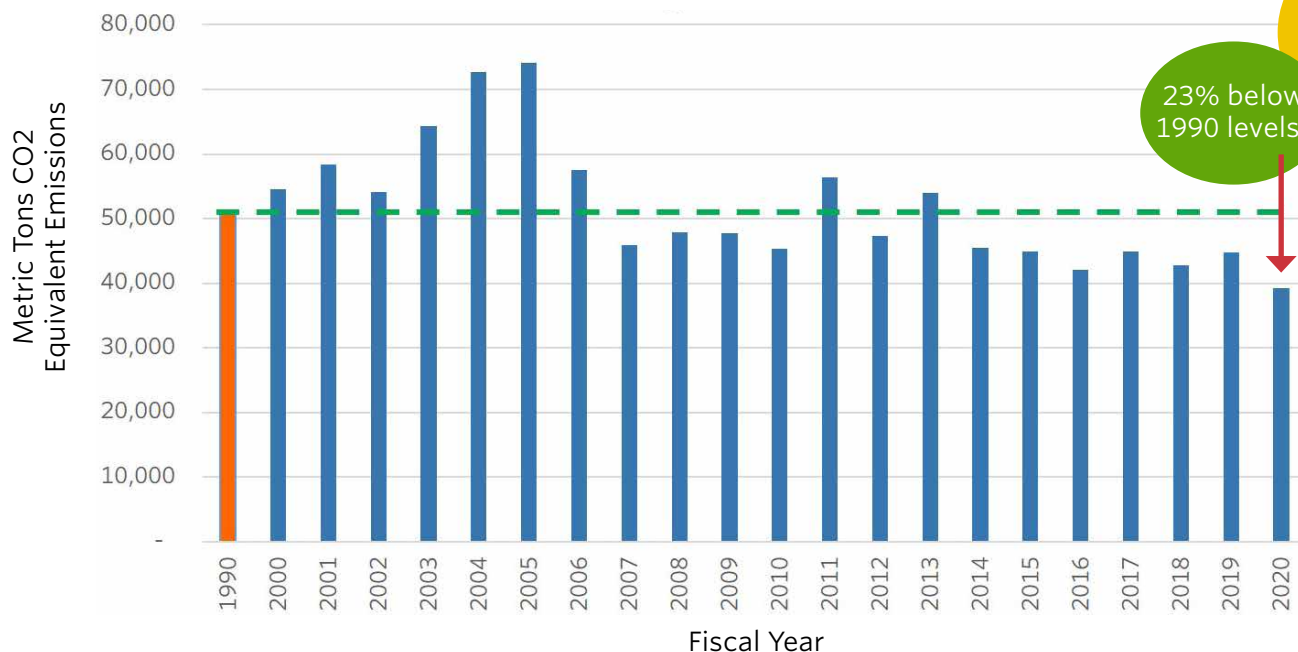
- In May 2019, three President's Picnics were held in Boston, Grafton and Medford (with a shuttle from the SMFA). **302 BYOP (Bring Your Own Place setting) participants** across all campuses received a reusable bamboo straw from the Office of Sustainability as part of these zero-waste events.



UNIVERSITY REPORT CARDS

This section contains a breakdown of the university's greenhouse gas emissions, energy usage, and waste data. FY20 data is presented where available; otherwise FY19 numbers are used.

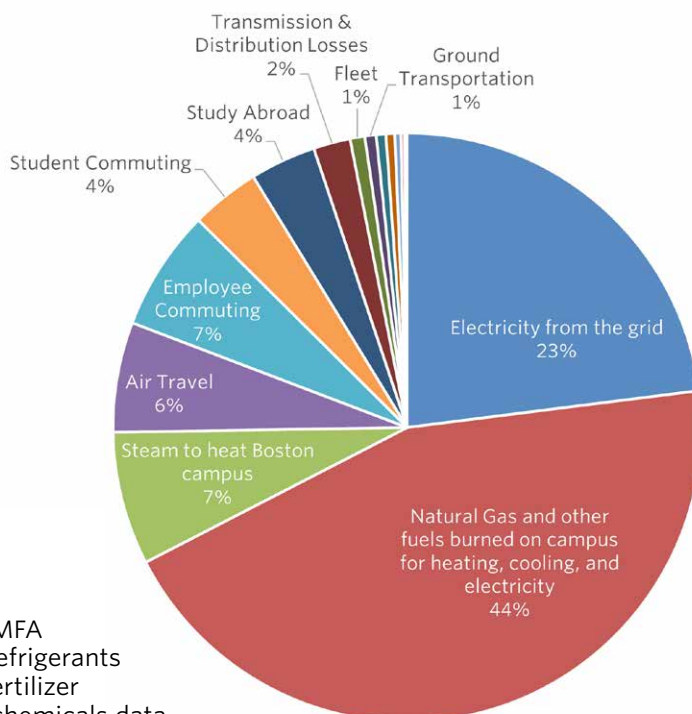
Greenhouse Gas Emissions from Energy & Fleet at Tufts over Time



*Note: In comparison, Tufts had reduced GHG emissions by 12% in FY19. The significant difference in FY20 is partially a result of the shutdown of campuses for 3 months due to the COVID-19 pandemic.

GHG Emissions FY 2020 —All Campuses

Total emissions:
50,698 MTCO₂e

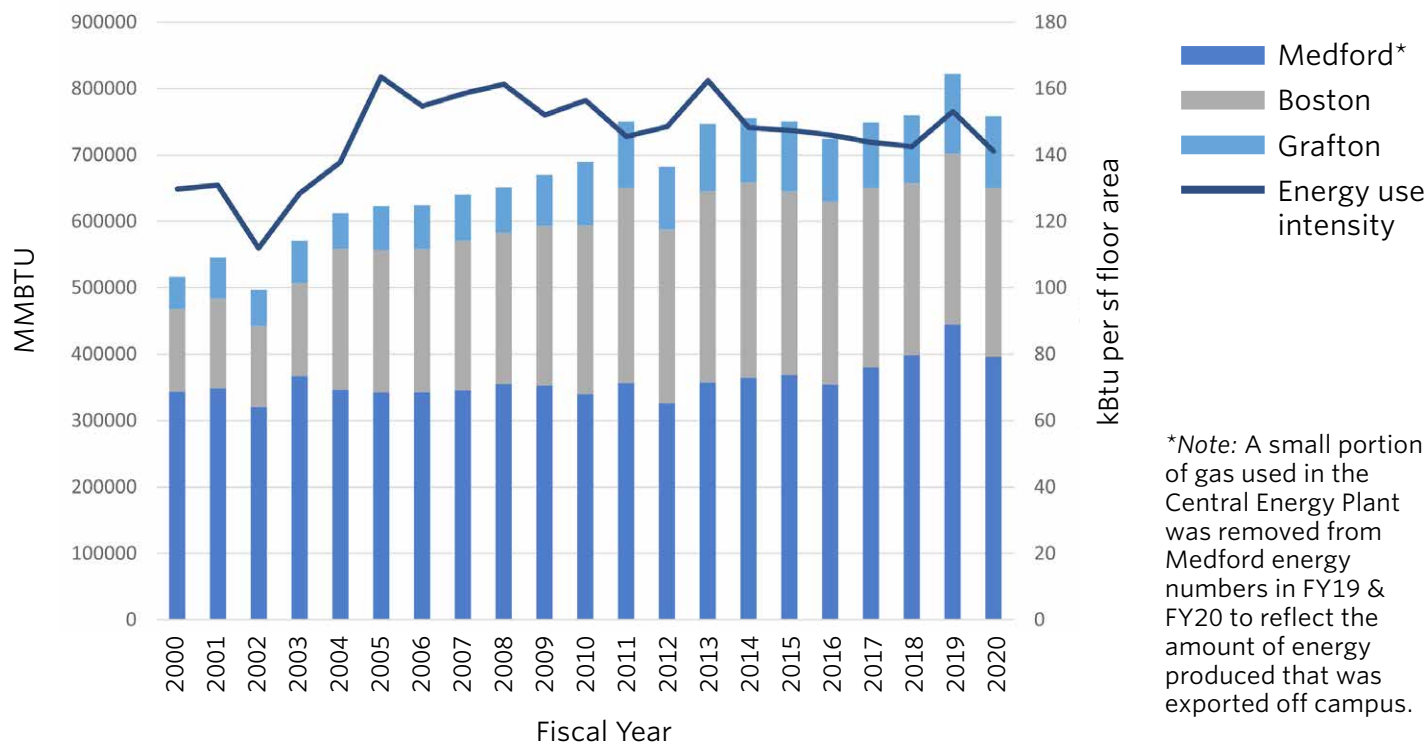


Notes:

- Does not include any leased spaces, such as the SMFA
- The following sources comprised of 0.5% or less: refrigerants & chemicals, paper, animals, wastewater, waste, fertilizer
- We have not yet captured all of the refrigerants & chemicals data

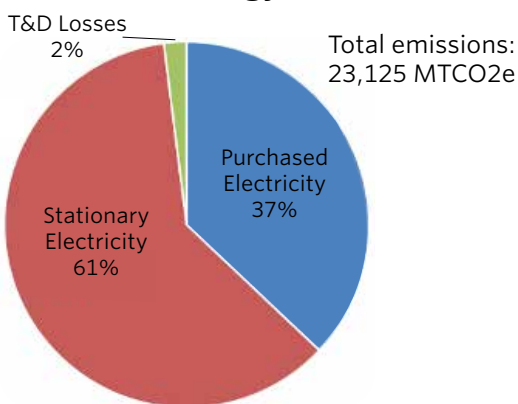
UNIVERSITY REPORT CARDS

Energy Consumption over Time— All Campuses

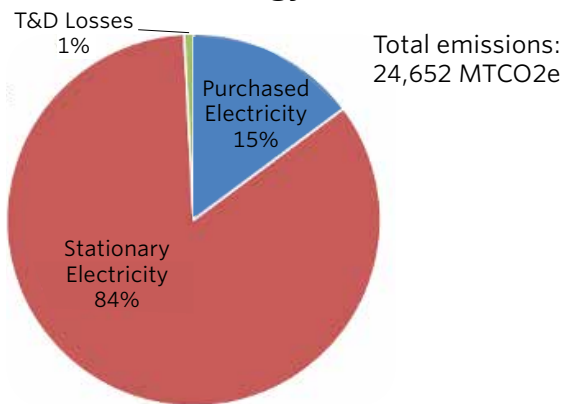


Energy Highlight: Impact of Central Energy Plant on the Medford/Somerville Campus

FY18 Medford Energy GHG Emissions



FY19 Medford Energy GHG Emissions



Completed in 2018, the Medford **Central Energy Plant (CEP)** burns natural gas to generate electricity, steam, and chilled water with energy-efficient co-generation technology.

The graphs above show that the CEP has enabled the Medford campus to get more of its electricity from on-campus stationary energy and less from purchased energy.

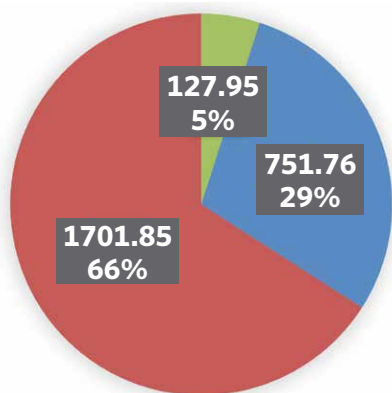
Notes:

FY18: Does not include leased buildings/Walnut Hill. The CEP was operating for just 4 months at the end of FY18.
FY19: Does not include leased buildings/Walnut Hill.

UNIVERSITY REPORT CARDS

Waste data was self-measured or provided by Republic Services and other university waste vendors.

FY19 University-wide Waste Composition in U.S. Tons

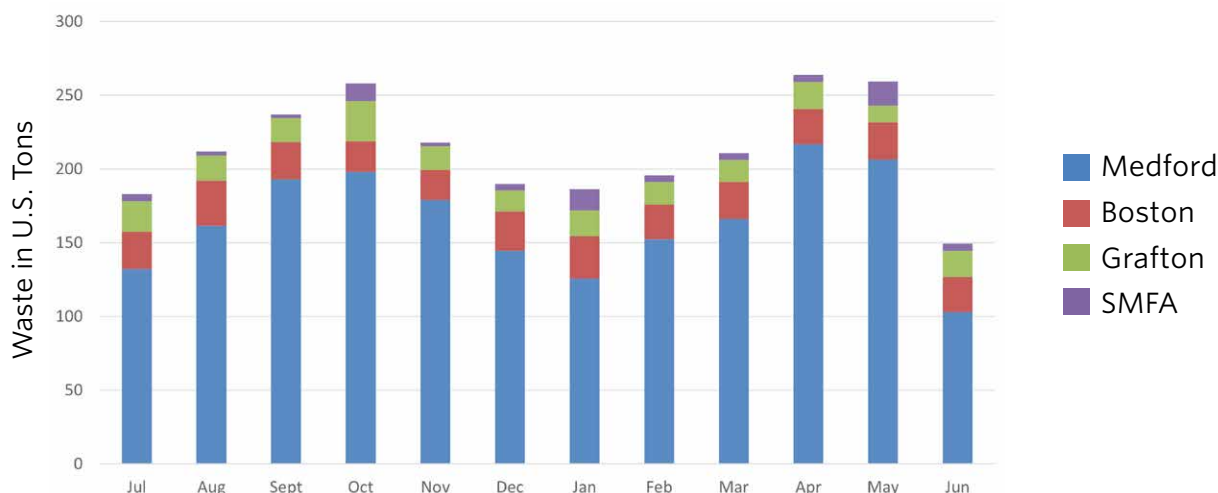


This chart depicts the quantities of waste in tons that were composted, recycled, or sent to landfills/incinerators across the university in FY19. These quantities do not necessarily reflect the actual percentages of items that were compostable, recyclable, or landfillable.

- Compost
- Recycling*
- Trash

*Note: Recycling includes single stream recycling as well as specialty recycling streams.

FY19 University-wide Waste Production by Month

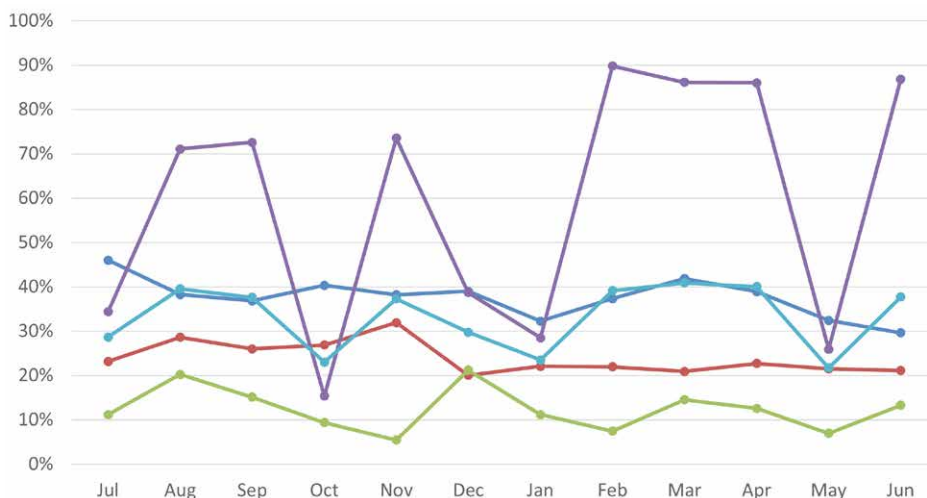


Diversion rate indicates the percentage of total waste that was diverted from landfills and incinerators through recycling or reuse.

- Medford
- Boston
- Grafton
- SMFA*
- Total University Average

*Note: The SMFA diversion rate appears irregular within individual months due to infrequent waste pick-up schedules.

FY19 Waste Diversion Rate by Month



Recycling & Waste Management

OPERATIONS

Fast Facts: FY20

- 76 **Building inventories** ensured compliance with **new strategic bin standard**
- 20 **Recycling trainings** given to offices, departments & student groups
- 16 **New offices & departments** began **composting**
- 8 **Custodial trainings** given across all campuses;
- 180 **Custodial staff** trained

Specialty Recycling

- **26,875 nitrile gloves** were collected through a FY19 Green Fund [project to recycle gloves](#) in select laboratories across Tufts' four campuses.
- Total collection in other [specialty recycling streams](#) for FYs 19&20:
 - **17.36 US tons** of Textiles
 - **8.84 US tons** of Batteries
 - **0.51 US tons** of Ink & Toner cartridges

Plastic Film

In FY20, the OOS and [Eco-Reps](#) conducted **11 waste audits** and identified plastic film as a common contaminant in the recycling. To encourage [specialty recycling of plastic film](#), the OOS ran an educational campaign and entered a Trex challenge to recycle **500 lbs of plastic film in 6 months**, [earning 1 bench made of recycled plastic film](#) (pictured above).



Move-Out Waste Reduction during COVID-19

The OOS collected **10.29 U.S. tons of donations** during Move Out 2020, including the impromptu early Move Out in March. The donations were later distributed to students through the [FIRST Resource Center](#) and the [Back to School Sale](#), as well as freecycled to Tufts' host communities. Here's the breakdown:



- **936 lbs** of non-perishable food items—donated to food pantry run by [Tufts Food Rescue Collaborative](#) and [Tufts Mutual Aid](#)
- **1,786 lbs** of home supplies: vacuums, mirrors, lamps & storage bins
- **2,355 lbs** of kitchen items & appliances
- **894 lbs** of additional donations in May
- **303 lbs** of sanitation & health items
- **838 lbs** of books & school supplies
- **50 lbs** of miscellaneous items
- **12,528 lbs** of textiles
- **881 lbs** of furniture

OOS Specialty Recycling Intern accepts donations from a student at Move-Out 2020.



Medford/Somerville: A Bee-Certified Campus

The M/S campus [became a Bee-Certified Campus](#) in March 2020, making Tufts the first urban educational institution in MA to receive this certification. More on the [Tufts Pollinator Initiative](#) and their achievements in their first two years:

- **\$11,050** grant received from the Green Fund
- **1,900** people engaged through outreach
- **100** species of pollinators supported
- **5** graduate student leaders
- **3** pollinator gardens planted

M2S Tufts Network Launched

In March 2019, [Tufts joined the miles2share \(m2s\) app](#), which creates an exclusive Tufts user network and connects those with overlapping commutes for carpooling.





Construction of the Green House

The [Green House](#), built in FY19, is a special interest house for upperclassmen students who are focused on living sustainably. The woodframe house has all-electric appliances and fixtures, solar panels, energy-efficient heating and insulation, and was built with sustainable materials including recycled glass counter tops and New England sourced wood flooring.

LED Lighting

While doing any lighting work, [Facilities Services](#) now upgrades to LEDs. Efficiency controls such as occupancy sensors and astronomical time clocks are also installed wherever feasible to reduce the amount of time that lights are on. Select lighting highlights by campus for FYs 19&20 include:

- **Medford/Somerville:** Facilities partnered with the [Office of Residential Life and Learning](#) to identify dark spots in outdoor areas and address them with LEDs.
- **Boston Health Sciences:** All LED lighting was installed in the Dental and Medical Education Buildings, saving a total of 719,388 kWh annually.
- **SMFA:** Facilities is in the process of installing efficiency controls on all lighting and upgrading fluorescent fixtures to LEDs.
- **Grafton:** Lighting fixture replacements in Building 54 save 15,929 kWh annually.

Buildings Updates

Tufts completed many capital projects and routine building updates with sustainability features in mind during FYs 19&20. A few highlights:

[Barnum Hall](#)

This historic building was renovated and received the following upgrades:

- Occupancy sensors on lights & heating/cooling systems
- Double-paned windows to reduce energy consumption
- Low-flow faucet aerators & metered faucets
- Installation of an energy recovery unit
- Connection to the CEP for more efficient heating & cooling

[Community Housing \(CoHo\)](#)

13 houses were renovated & 1 new house was constructed. Sustainable improvements include:

- New windows
- Energy-Star appliances
- Heat-recovery systems

[Residence Halls](#)

Tilton Hall, home to the lower campus boiler plant, received new controls for more efficient operations. Upgrades across several other M/S halls:

- Energy-efficient lighting with occupancy sensors
- New roofs with insulation
- Renovated bathrooms
- HVAC improvements
- New windows

[Boston Health Sciences Campus](#)

Across the Dental and Medical Education Buildings, battery-powered soap and paper towel dispensers were replaced with manual units, reducing the amount of batteries used.



The Jumbo statue in front of Barnum Hall

[SMFA](#)

An acid waste tank and its controls were replaced to control the PH of waste water running to the Mass. Water Resources Authority.

Sustainability in Food

In FY20, 23% of all foods purchased by [Tufts Dining](#) were grown or processed within 250 miles of the M/S campus, surpassing their original goal of 20%. Other accomplishments:

- **897 reusable take-out containers were distributed** when [a new program](#) was introduced to residential dining halls in fall 2019.
- **1,602 Family Meals** and **4,741 lbs of additional food were donated** to Food for Free, in partnership with the [Tufts Food Rescue Collaborative](#).



TUFTS
DINING

PLANNING & ADMINISTRATION

Energy Systems Decarbonization on M/S Campus



In fall 2018, Tufts hired the Ramboll Group to examine energy use and distribution on the Medford/Somerville campus, Tufts' largest source of emissions. Three community engagement events were conducted to gain a wide array of perspectives and mapped out potential scenarios to decarbonize the energy systems on the M/S campus by 2050.

Ecosystem Energy Services, specialists in deep energy retrofits, were engaged the following year to refine a clear pathway to decarbonization in M/S that included short, medium, and long-term objectives. In July 2020, Ecosystem shared a **Carbon Neutrality Framework and Action plan for the M/S campus** with the [Campus Sustainability Council](#).

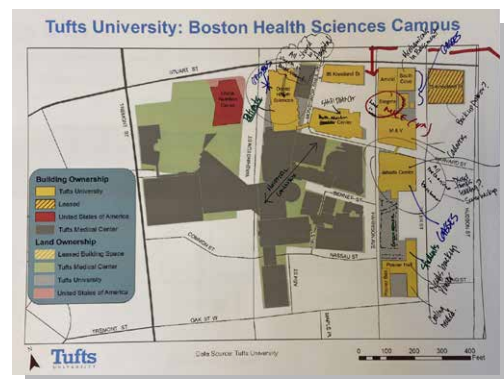


ecosystem

Community Resilience Building Workshop: Boston Health Sciences & SMFA Campuses

In line with the [Second Nature Climate Commitment](#), Tufts is conducting **Community Resilience Building (CRB) workshops** to identify the infrastructural, societal, and environmental strengths and areas of improvement specific to its campuses. The [January 2020 CRB workshop](#) discussed:

- **4 climate hazards considered** for the geographic area:
 - Hurricanes
 - Extreme Temperatures
 - Flooding
 - Infectious Diseases
- **Top action items** for the Boston campuses:
 - Improving communication, both within Tufts and between Tufts and the City of Boston
 - Increasing Tufts' energy independence
 - Actively supporting improved public transportation
 - Coordinating with local communities on people-centered approaches to hazard mitigation and resilience building



A map of the Boston Health Sciences Campus, labeled with vulnerabilities and strengths in a climate change-related hazard event.



Intersectional Environmentalism

Tufts Table: Climate Emergency

In February 2020, The Fletcher School, [CIERP](#), and the [Bridging Differences Initiative](#) of the Office of the Vice Provost hosted **Tufts Table: Climate Emergency**. Students, faculty, staff and other community members discussed how global warming intersects with environmental justice, ethical and human rights, and divestment from fossil fuels, and wrote a personal pledge for climate action.

Juneteenth Event: Racial Justice and Sustainability

As part of Tufts' [Day of Reflection, Commitment, and Action for Racial Justice](#) on June 19, 2020, the Office of Sustainability hosted a **breakout session on Racial Justice and Sustainability**. The session was led by Prayank Jain, F20, Cyatharine Alias, AG20, Kayla Williams, A19, and Office of Sustainability staff. Discussion covered the intersections of racial justice and sustainability, a celebration of Black environmentalists, and an exploration of potential steps forward. Next steps were later shared at an all-school closing session.

INNOVATION & LEADERSHIP

Zero Waste Events

A total of **48 Zero Waste Events** were held throughout FYs 19&20, many of which were multi-day conferences with multiple meals. [Detailed information for FY20:](#)

- **44 separate meal events** served a total of **18,655 individual meals**
- **135 OOS staff & on-call student workers** staffed the events
- **386 bags of compost, 104 bags of recycling & 62 bags of trash** were collected in total



A student monitoring a Zero Waste Station at the Freshman Food Fair, Fall 2019

For anyone at the university who is interested in planning a sustainable or zero waste event, purchasing green materials, or starting a Green Team in their office, the OOS also maintains a variety of [office sustainability guides and resources](#).

SMFA Sustainability Task Force, turned Committee



Members of the SC receiving a Green Office certificate from Shoshana Dodge of the OOS.

The SMFA Sustainability Task Force, founded in FY18, was recognized by SMFA Dean Nancy Bauer as a standing [Sustainability Committee \(SC\)](#) in FY20. Below are some of the projects that SMFA faculty, staff and students on the SC have worked on over the past two years:

- **CArte Util:** A dedicated space at the SMFA where students can donate or pick up used art supplies for free, to prevent these items from going to waste.
- **Health, Safety and Sustainability Day:** An annual program, began in spring 2019, with workshops, visiting artists and discussions on the importance of developing an art practice that is healthful, safe, and sustainable.
- **Green "Office" Certification:** In March 2020, the OOS certified the entire SMFA building at 230 Fenway as a Bronze-level green workspace. With classrooms and all types of studio spaces, it's the first building of this kind at Tufts to become Green Office certified.

New Entry Sustainable Farming Project (NESFP)



[NESFP](#), a Friedman School initiative, aims to strengthen local food systems by supporting new and immigrant farmers. In FY20, New Entry received a Green Fund grant to work with [Tufts Dining](#) on a **Fall Harvest Week**, spotlighting local food and community education.

In summer 2020, New Entry's [Community Supported Agriculture \(CSA\) program](#) also launched a new **CSA Your Way** option to make purchasing locally grown food more accessible.

Sustainability Peer Review & Next Steps



In October 2020, the directors of sustainability from Smith College and Princeton University conducted a review of sustainability at Tufts. They found that Tufts has many strengths on which to build, including a history of environmental leadership, civic engagement and interdisciplinary scholarship, but that elements are not aligned to generate maximum impact. Consequently, Tufts has committed to taking the following actions over the next year:

- Expand the scope of the Sustainability Council to encompass university-wide academic and administrative efforts
- Develop and communicate a 3-year sustainability plan with specific objectives and priorities
- Build alignment and collaboration between the Office of Sustainability, TIE, and CREATE
- Advance current initiatives and emerging opportunities, such as the decarbonization plans for the Medford/Somerville and Grafton campuses and renewable energy purchases

Sustainability for All

Extreme heat waves and intensified natural disasters may not create the social inequalities that burden our society, but they do exacerbate them. Communities of low-income people, Black people, Indigenous people, and people of color, who face racism, prejudice, and the adverse effects of the COVID-19 pandemic on a daily basis, are also the communities who are being hit hardest by the impacts of climate change.

In facing this reality, we must recognize how we are complicit in these interconnected crises and put equal energy into cultivating social and environmental justice at our institution as we put into our commitment to carbon neutrality.



“The climate justice fight here in the U.S. and around the world is not just a fight against the [biggest] ecological crisis of all time. It is the fight for a new economy, a new energy system, a new democracy, a new relationship to the planet and to each other, for land, water, and food sovereignty, for Indigenous rights, for human rights and dignity for all people. When climate justice wins, we win the world that we want. We can’t sit this one out, not because we have too much to lose, but because we have too much to gain.”

—Miya Yoshitani, executive director of the Asian Pacific Environmental Network

ACKNOWLEDGMENTS

PROGRESS REPORT

The initiatives and projects in this report are based on information available to the Office of Sustainability at the time of publication. It is by no means comprehensive or inclusive of all sustainability initiatives that took place at Tufts in Fiscal Years 2019 and 2020 (July 2018 – June 2020). The participation and contribution of all members of the Tufts community is incredibly valuable and greatly appreciated.

For inclusion in the next report, email sustainabilityoffice@tufts.edu.

DEPARTMENTS & PROGRAMS

The following departments, programs and groups were responsible for the initiatives and projects included in this report:

- Campus Planning
- Capital Projects
- Center for International Environment & Resource Policy
- Civil and Environmental Engineering
- CREATE Solutions
- Department of Chemistry
- Dining Services
- Facilities Services
- FIRST Resource Center
- Global Development and Environment Institute
- Medical Students for a Sustainable Future
- New Entry Sustainable Farming Project
- Northeast Healthy Soil Network
- Office of Residential Life and Learning
- Office of Sustainability
- Office of the President
- Office of the Vice Provost
- Operations Division
- SMFA Sustainability Committee
- Sustainability Council
- Tufts Eco-Ambassadors
- Tufts Eco-Reps
- Tufts Food Rescue Collaborative
- Tufts Green Fund
- Tufts Institute of the Environment
- Tufts Mutual Aid
- Tufts Pollinator Initiative
- Tufts University School of Medicine
- Urban and Environmental Policy and Planning

DATA & FEEDBACK

The following individuals contributed to this report:

- Alex Rabin
- Barbara Stein
- Cory Pouliot
- Grace Van Deelan
- Jacqueline Shen
- Kristen Kaufman
- Mary Davis
- Momo Shinzawa
- Nick Dorian
- Patti Klos
- Ruth Bennett
- Sara Rosales
- Sarah Iacobucci
- Shoshana Dodge
- Taite Pierson
- Tina Woolston

PHOTOGRAPHY

Front Cover

Olin Hall (Alonso Nichols/Tufts University)

Page 1

Science and Engineering Complex (Anna Miller/Tufts University)

Page 3

Students in class (Tina Woolston)

Dr. Iacobucci in the lab (Sara Iacobucci)

Page 4

Green Office ceremony (Caitlin Cunningham)

Page 8

Bench of recycled plastic film (Carly Thibodeau)

Move Out 2020 (Kristen Kaufman)

Page 9

Jumbo statue (Jake Belcher for Tufts University)

Page 10

Boston campus base map (Hanna Carr)

Page 11

Zero Waste Event (Kristen Kaufman)

SMFA SC (Ariana Shirzadi)

Page 12

Spring blossoms (Alonso Nichols/Tufts University)

Back Cover

Olin Hall (Alonso Nichols/Tufts University)



Office of
Sustainability