

Having trouble viewing this email? [Click here](#)

# Tufts *Sustainability in Action!* gets green



## In This Issue

[Environmental Action gets Press](#)

[Eco-Reps featured in The Daily](#)

[Cambridge's Cool Maps](#)

[The Atlantic in 100 years](#)

[Job Opportunities](#)

[On Campus News](#)

[Upcoming Events](#)

[Educational Opportunities](#)

[Webinars](#)

## Environmental Action Class Featured in the Daily

The course Environmental Action: Shifting from Saying to Doing has been influential on Tufts campus the last few semesters, being the driving force behind double sided

## November 5, 2010

### Dear Tufts Environmental,

All of the sudden it's November. The leaves are fallen, the frosts are coming, and we're left with barely a month and a half of the semester. We have a bunch of great events to help you enjoy what's left of the semester, including one that's going to help warm you up. I'm talking, of course, about the [SOUPer Bowl](#) that ECO is throwing on Thursday next week. There will be lots of delicious soup to go around, as well as a bunch of really great people and some really cool art from artists around campus.

Two of the Office of Sustainability programs were featured on the front page of the Tufts Daily this week - check out the articles on the sidebar.

Additionally, the bike share group that I've been a part of this semester has launched a blog. Check it out at [tuftsbikes.wordpress.com](http://tuftsbikes.wordpress.com)

Stay Green!

-Jason

printing and the trayless dining initiative. This semester, the class, taught by our very own Tina Woolston, is taking on bottled water on campus. Read the Tufts Daily article on their plans [here](#).



## Revamped Eco-Rep program featured in The Daily

The Daily has been particularly interested in the goings on in our office this week. Following the write up about the Environmental Action class on the front page of Thursday's paper, today's paper highlighted the new (well... returning) Eco-Reps program. Read about it [here](#).



*Metcalf RAs dressed in "trashion."*

Tina was also interviewed about the Sustainability Endowment Institute's Green Report Card, electric cars on campus and bike lanes in Somerville, so keep an eye on The Daily for even more stories about sustainability!

*Header photo: The Eco-Ambassadors take a tour of Castella Waste Systems recycling facility last week. See more pictures [here](#).*

## On Campus News

### Fletcher Students Start Composting at Mugar Cafe

In an effort to help Fletcher students be more environmentally conscious, Mugar cafe and Blakeley Hall have recently launched a composting program for students. Fletcher GREEN with support from Blakeley Hall, Mugar Café and the Tufts Recycling, Catering, and Facilities Departments worked to create the program that began on Monday, November 1. Fletcher GREEN hopes the program will reduce the amount of food waste sent to landfills, waste that produces methane and contributes to global warming. Students can deposit food scraps excluding meat or fish, eggs, and trash into the bins in the Blakeley kitchen and Mugar Café. These food scraps will be combined with Tufts University Dining Services food waste, picked up by Save That Stuff, and taken to Rocky Hill Farm in Saugus MA, about 7 miles from Tufts. Rocky Farm will organically recycle the waste to create high quality compost for farmers and landscapers across Massachusetts. For more information contact [fletchercomposts@gmail.com](mailto:fletchercomposts@gmail.com).



*Fletcher GREEN co-chair Aaron Strong tries out the new composting bin*

## On-Campus Events

New:

### SOUPer Bowl

**November 11, 2010**

## Cambridge's Cool Maps

The Cambridge Community Development Department has updated maps showing the locations of [renewable energy systems](#) and [green building projects](#) in Cambridge.

Renewable Energy Systems In Cambridge



## What could the Atlantic look like in 100 yrs?

Atlantic Rising is a charity on a 32,000 mile journey circumnavigating the Atlantic overland along the 1m contour line. This is the level scientists predict sea levels may reach in the next 100 years.

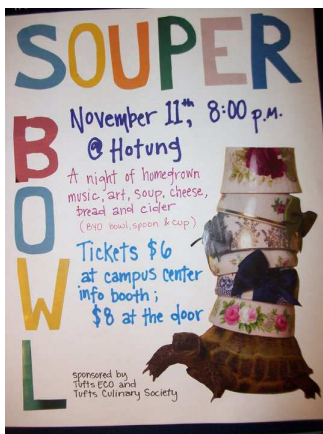


Along the way they are creating an educational network between 15,000 students in low-lying coastal communities. Through photography, films and writing, they are also documenting what will be lost if these predictions come true.

### 8:00pm-10:30pm Hotung Cafe

As the days grow shorter and colder and the winter sniffles set in... ECO is hosting a SOUPER Bowl on Thursday, November 11!

Tickets will be for sale in the Campus Center ticket booth for \$6 the week leading up to the event, and \$8 at the door.



[View the full sized poster here.](#)

Featuring:

- Warm and tasty soup** made with **local ingredients** (including the one and only Butternut Squash Bisque!)
- Delicious hot cider**
- Scrumptious local cheeses**
- Awesome Tufts students' art** and
- Jammin live music** by [President Soup](#)

Remember to bring your own bowl, spoon and cup!

Join us for a most delicious, warm and toasty, feel-good night!

## Off-Campus events

**New:**

### Weekend Barnraising and Benefit Concert

**November 6, 2010 (Concert)**  
**November 7, 2010 (Barnraising)**  
**Various Locations, Somerville**

If you had fun on 10/10/10 helping to weatherize ATO or would like to get involved in some Barnraisings, you're in luck! This Sunday, there is a barnraising in Quincy. To help out with that, email Patti Keville at [pkeville@gmail.com](mailto:pkeville@gmail.com).

<http://atlanticrising.org/>

## Job Opportunities

[Solid Waste Manager](#),  
Public Works Department,  
Newton, MA

[GIS Analyst](#), MillionTreesNYC,  
New York City

[Sustainability Coordinator](#),  
Wilfrid Laurier University


[More job listings from TIE](#)

-

[Career resources at OOS](#)

Know a friend  
who would like  
to get this  
newsletter?



 Forward to a Friend

Got this via a friend? Then

[Join our Mailing List](#)

Privacy by  **SafeSubscribe**<sup>SM</sup>  
For Email Marketing you can trust

Additionally, on Saturday there will be a 350.org benefit concert involving a fellow barnraiser and Tufts music professor. The concert is called Drumming for the Planet. For more info and ticket purchasing, visit the [website](#).

## Somerville Community Service Day: The Groundwork Greenathon

**November 13, 2010**  
**10am-2pm**  
**Various Locations, Somerville**

Join Groundwork Somerville in picking up leaves and trash in four locations in Somerville. Ask your friends and neighbors to sponsor you for up to four hours of work, and you will be doubly supporting a greener Somerville. Groundwork Somerville fosters healthy education, green jobs, and sustainable community in our city through our schoolyard gardens program, our teen and young adult green jobs programs, and much more. T-shirts, hot chocolate and snacks provided! Please bring work gloves and wear clothes that can get dirty.

Go to our website for more information:

<http://www.groundworksomerville.org/2010/10/28/1905/>

Also, RSVP on the Facebook Event

page: [http://www.facebook.com/event.php?eid=163469770342760&num\\_event\\_invites=0](http://www.facebook.com/event.php?eid=163469770342760&num_event_invites=0)

## New England Conference of the Parties, NE COP

**November 19-21, 2010:**  
**Wesleyan University, CT**

The United Nations is having a climate conference this winter, which is connected to the Kyoto protocol and similar to the conference in Copenhagen last year. Leaders from all over the world will meet to discuss the direction of international climate policy.

In response, [Students for a Just and Stable Future](#) (SJSF) decided to plan a conference for all students in New England where we could come up with our official stance as a generation on what policies we believe the international COP should follow. Our statement will be sent to the conference in Cancun.



We are the ones who will be affected most by these decisions, so we have to MAKE SURE that we are heard. This is one way to do that.

SJSF is collaborating with and co-sponsoring the National Conference on Pricing Carbon Emissions at Wesleyan to accomplish this.



- SJSF has 150 spots at a price of \$25/person (normal cost of the conference is \$125 and \$150 for day of registration). If you would like to register, do so BEFORE FRIDAY NOV. 5th at: <https://salsa.democracyinaction.org/o/715/event/pricing-carbon-conference-2010>. After Friday it goes up to \$40. Make sure that you check that you are with SJSF
- After registering, also email Sarabeth Buckley, [sarabeth.buckley@tufts.edu](mailto:sarabeth.buckley@tufts.edu). There are already people going from Tufts and we can coordinate transportation/figure out housing
- Speakers include Bill McKibben and James Hansen

## Previously Mentioned:

(Click the links for more information)

### [Boston Harbor Sea Level Rise Forum](#)

**November 9, 2010:**

**6:00pm-7:30pm**

**New England Aquarium IMAX Theatre, Boston**

**November 10:**

**8:30am - 12:30pm, lunch provided**

**John Joseph Moakley Courthouse, Boston**

### [2010 Recycling Award Gala Celebration](#)

**November 17, 2010 5:30 - 9pm**

**The Artist for Humanity EpiCenter  
100 West 2nd Street, Boston**

## Educational Opportunities

### Previously Mentioned:

(Click the links for more information)

#### [EPA Sustainability Grant Opportunity](#)

**Deadline: December 22, 2010**

**Inman Square, Cambridge (specifics TBA)**

#### [Campus Ecology Costa Rica](#)

**January 4-13, 2011**

## Webinars

### Solectria Renewables Webinar Series

**Friday, November 19th, 2010 at 2pm - Utilizing  
Solectria Renewables PO Check list**

**Friday, December 3rd, 2010 at 2pm - Utility-Scale  
Solar**

**For more information, and to register for the  
webinars, [click here](#).**

See you next week. And don't forget to [send in your  
pictures](#) for the header!

The Tufts Office of Sustainability  
<http://sustainability.tufts.edu/>

[Forward email](#)



This email was sent to elizabeth.mahaffy@tufts.edu by [sustainabilityoffice@tufts.edu](mailto:sustainabilityoffice@tufts.edu) |

[Update Profile/Email Address](#) | Instant removal with [SafeUnsubscribe™](#) | [Privacy Policy](#).

Tufts Institute of the Environment | Tufts University Miller Hall | 210 Packard Ave | Medford | MA | 02155